

ST. PETERSBURG COLLEGE

ST. PETERSBURG/GIBBS CAMPUS

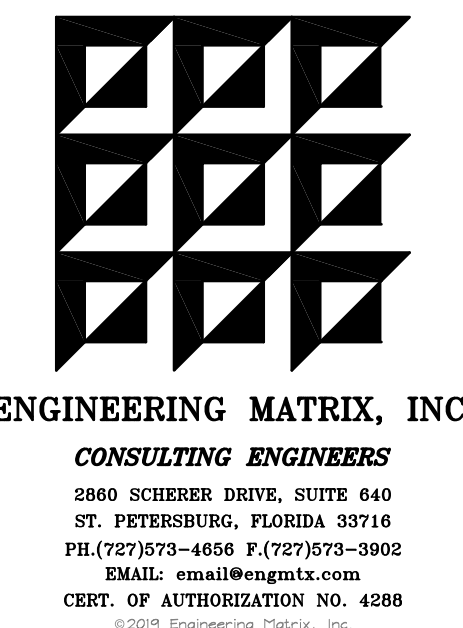
LIGHTING, 5TH AVENUE PARKING LOT

SPC PROJECT NO. 265-Q-20-3

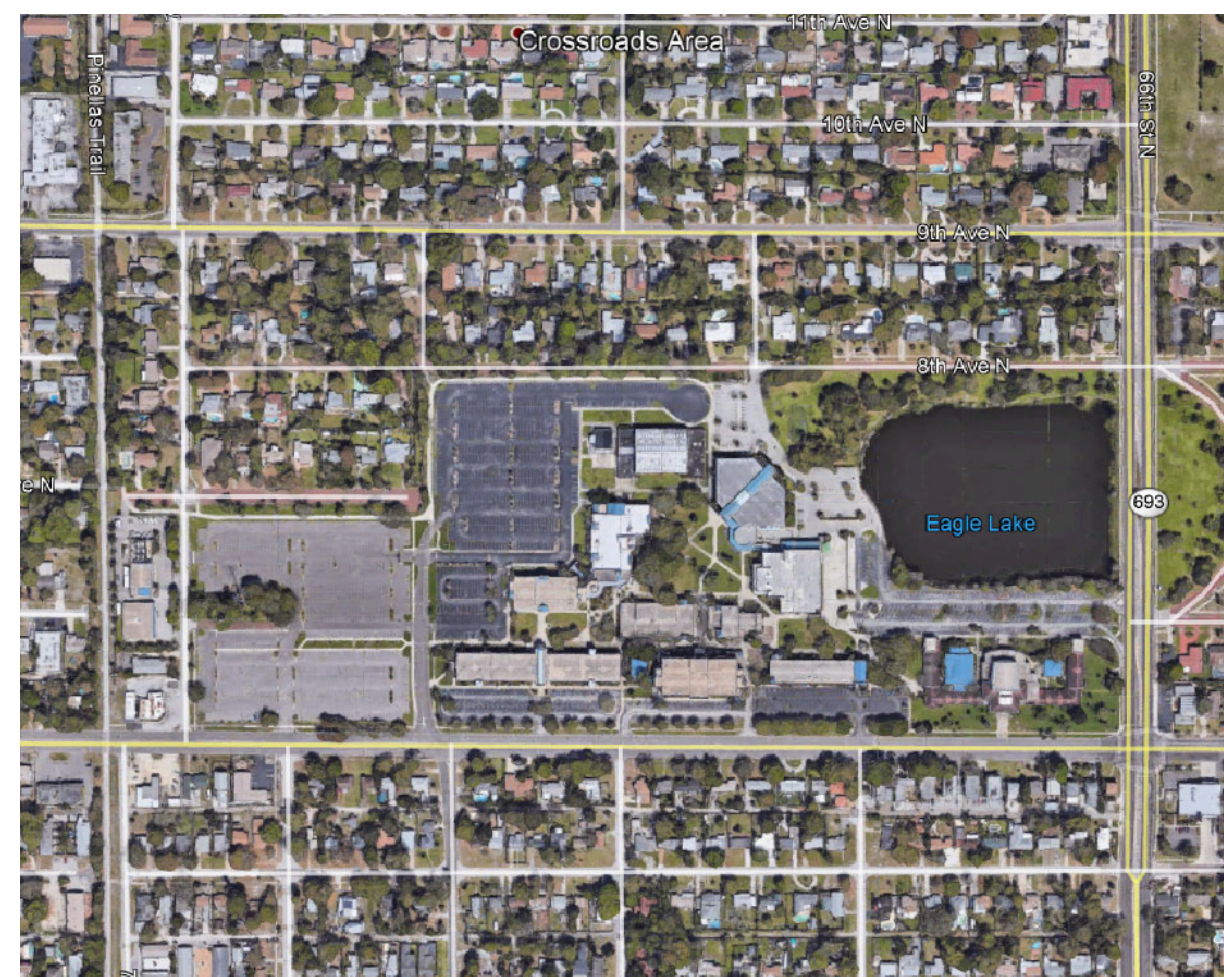


BOARD OF TRUSTEES

KATHERINE E. COLE, CHAIRMAN
BRIDGETTE BELLO, VICE CHAIRMAN
DEVERON M. GIBBONS
THOMAS KIDWELL
NATHAN STONECIPHER



DR. TONJUA WILLIAMS, COLLEGE PRESIDENT



SITE LOCATION MAP

TABLE OF CONTENTS	
<u>ELECTRICAL</u>	
E0.0	ELECTRICAL LEGENDS AND DETAILS
E0.1	ELECTRICAL SPECIFICATIONS
E1.1	SITE DEMOLITION PLAN WEST – LIGHTING
E1.2	SITE DEMOLITION PLAN EAST– LIGHTING
E2.1	SITE PLAN WEST – LIGHTING
E2.2	SITE PLAN EAST – LIGHTING
E3.1	SITE PLAN WEST – PHOTOMETRICS
E3.2	SITE PLAN EAST – PHOTOMETRICS

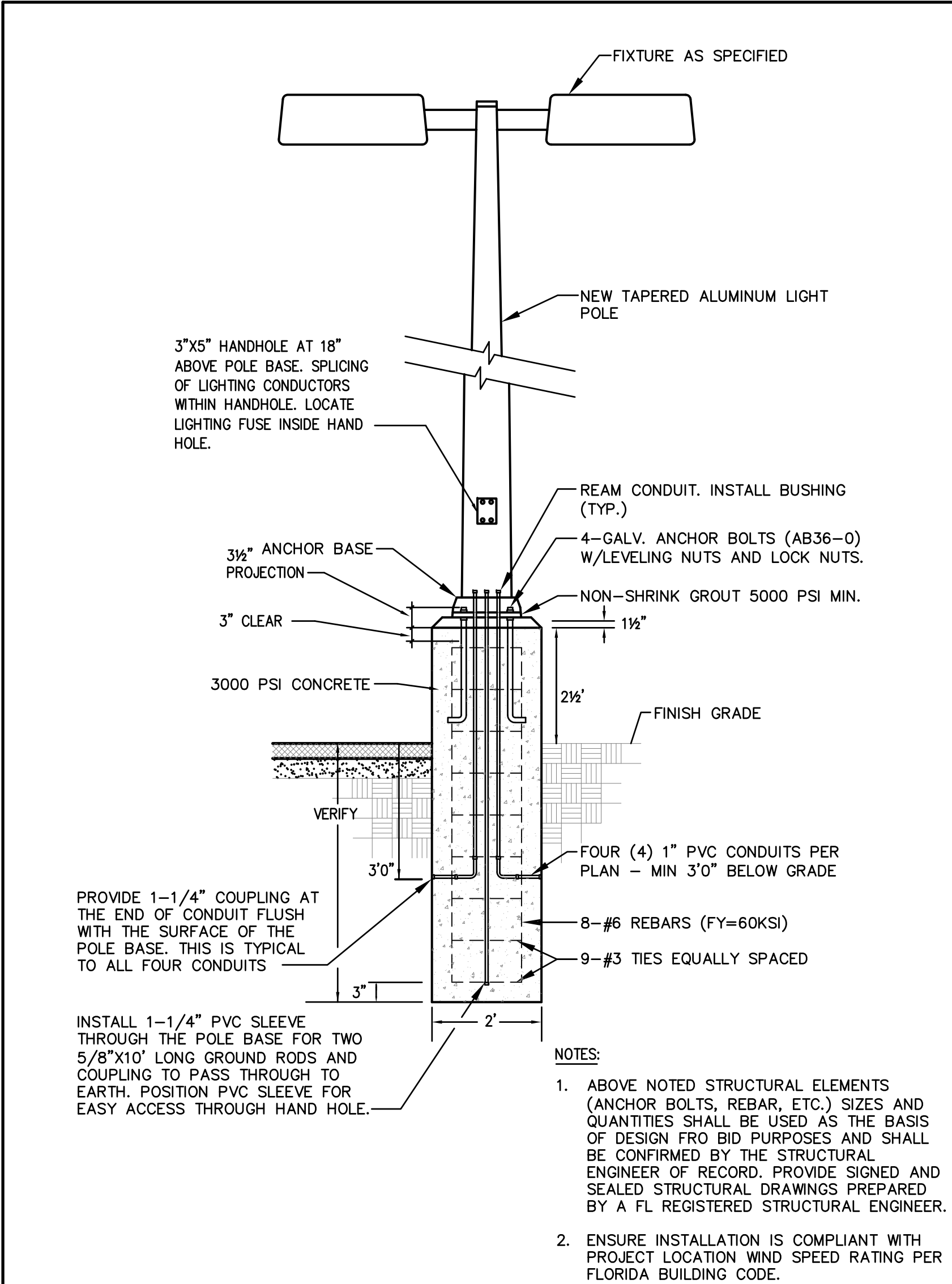
PERMIT DOCUMENTS
NOVEMBER 26, 2019

GENERAL NOTES ELECTRICAL		
1. DO NOT SCALE FROM THESE DRAWINGS.		
2. ALL WORK SHALL BE DONE IN STRICT ACCORDANCE WITH THE NATIONAL ELECTRICAL CODE.		
3. ELECTRICAL CONTRACTOR SHALL COORDINATE WORK WITH ALL OTHER TRADES TO ASSURE PROPER CLEARANCES FOR EQUIPMENT AND TO KEEP THE JOB PROGRESSING.		
4. ALL EXTERIOR WIRING DEVICES TO BE WEATHERPROOF AND SHALL BE G.F.I. TYPE.		
5. CONDUIT RUNS SHOWN ARE DIAGRAMMATIC IN NATURE. CONTRACTOR IS RESPONSIBLE FOR SIZING AND LOCATING PULL BOXES PER NEC AND FOR COORDINATION WITH OTHER DISCIPLINES.		
6. CONTRACTOR SHALL COORDINATE EXACT LOCATIONS OF ALL ITEMS INSTALLED ON SITE.		
7. USE 10 AWG CU. CONDUCTORS FOR 20 AMPERE, 120 VOLT BRANCH CIRCUITS LONGER THAN 75 FEET, UNLESS OTHERWISE NOTED ON SITE PLAN. USE 10 AWG CU. CONDUCTORS FOR 20 AMPERE, 277 VOLT BRANCH CIRCUITS LONGER THAN 200 FEET, UNLESS OTHERWISE NOTED ON SITE PLAN.		
8. ALL SITE LIGHTING POLES AND POLE BASES SHALL BE CAPABLE OF SUPPORTING THE ENTIRE WEIGHT AND WIND LOADS OF THE ENTIRE LIGHTING SYSTEM. SHOP DRAWINGS MUST INCLUDE DRAWINGS OF THE ENTIRE ASSEMBLY FOR EACH OF THE MOUNTING CONFIGURATIONS USED. DRAWINGS MUST BE SIGNED AND SEALED BY A FLORIDA REGISTERED STRUCTURAL ENGINEER AND DESIGNED TO THE FLORIDA BUILDING CODE WIND LOAD REQUIREMENTS FOR THE PROJECT SITE.		

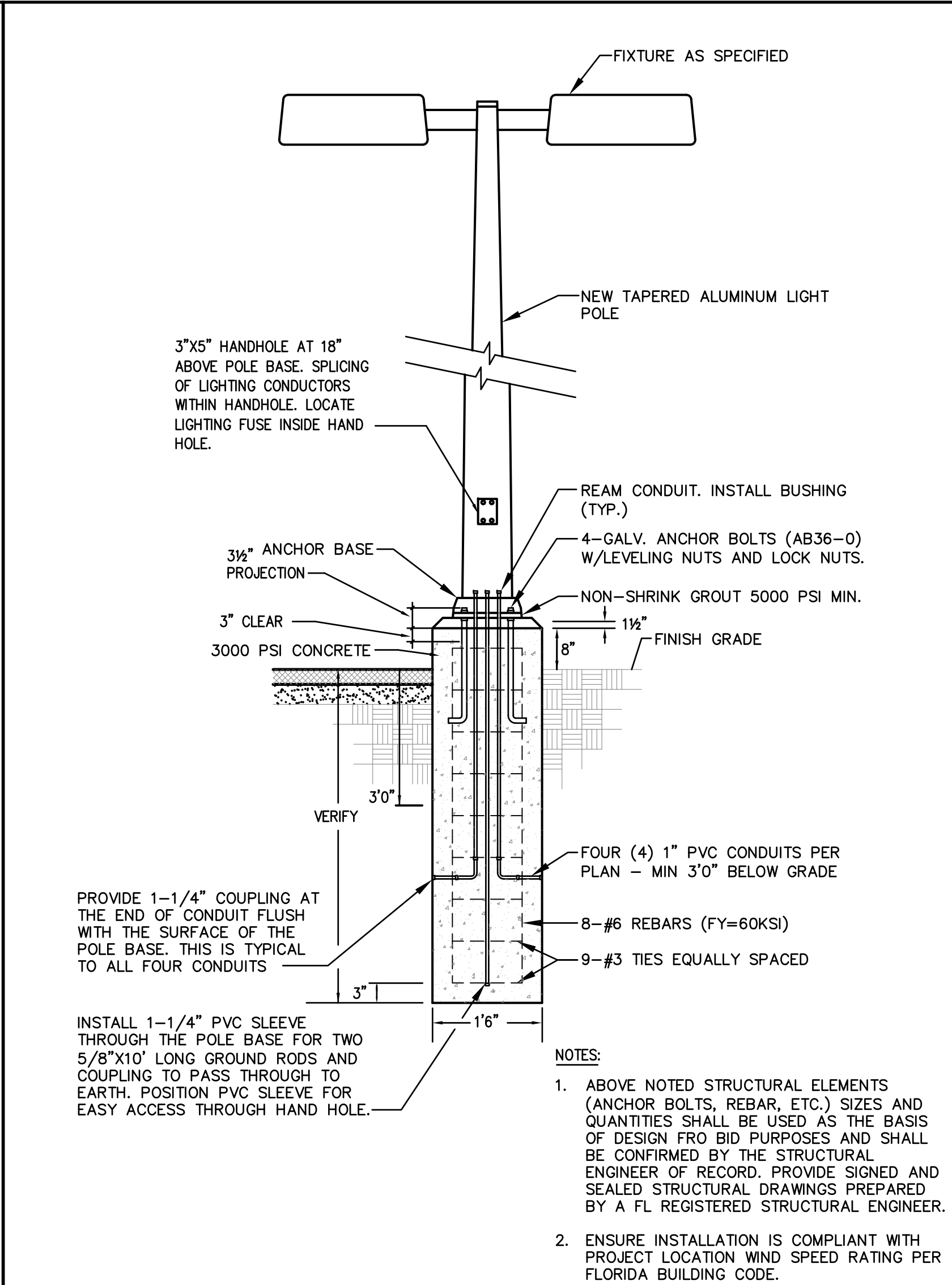
ELECTRICAL SYMBOL LEGEND		
SYMBOL	DESCRIPTION	MOUNTING AND NOTES
	TYPICAL LIGHTING SYMBOL NOTES: 1. UPPER CASE LETTER DENOTES FIXTURE TYPE, SEE FIXTURE SCHEDULE 2. LOWER CASE LETTER DENOTES SWITCHED LEG 3. SHADED FIXTURE SYMBOL INDICATES EMERGENCY FIXTURE 4. 'NL' DENOTES NIGHT LIGHT CIRCUIT	
○	POST TOP MOUNTED LIGHT FIXTURE. REFER TO LIGHT FIXTURE SCHEDULE FOR MORE INFORMATION.	SEE FIXTURE SCHEDULE
◻	POLE MOUNTED LIGHT FIXTURE. REFER TO LIGHT FIXTURE SCHEDULE FOR MORE INFORMATION.	SEE FIXTURE SCHEDULE
	TYPICAL RECEPTACLE, OUTLET AND JUNCTION BOX SUFFIX LEGEND: WP = WEATHERPROOF GFI = GROUND FAULT INTERRUPTER UP = UP (CONDUIT) DN = DOWN (CONDUIT) E = EXISTING	
⊕	DUPLEX RECEPTACLE (20A, 120V).	M.H. 16" AFF U.O.N.
⊙	JUNCTION OR OUTLET BOX, 4" SQUARE BOX U.O.N.	AS NOTED
■	PANELBOARD, 120/240V., 1 PH., 3W	6'-6" AFF MIN. TO TOP
○ UP	RACEWAY RISER, UP OR DOWN AS NOTED.	SEE SPECIFICATIONS
⌒	RACEWAY CONCEALED UNDER FLOOR, IN SLAB OR BELOW GRADE	SEE SPECIFICATIONS
⌒	RACEWAY CONCEALED IN WALL OR CEILING	SEE SPECIFICATIONS
⌒ L1B-1,3	HOMERUN TO PANEL, LETTERS INDICATE PANEL, NUMBERS INDICATE CIRCUITS.	SEE SPECIFICATIONS

NOTE:
NOT ALL SYMBOLS SHOWN IN THIS LEGEND MAY NECESSARILY APPEAR IN THESE DOCUMENTS. ADDITIONAL SYMBOLS MAY BE DEFINED ELSEWHERE IN SPECIFIC DRAWINGS.

LUMINAIRE SCHEDULE										
TYPE	MANUFACTURER	CATALOG NUMBER	LIGHT SOURCE				DIMMING	VOLTS	MOUNTING	NOTES
			TYPE	OUTPUT LUMENS	KELVIN COLOR TEMP	INPUT WATTS				
S	LITHONIA	DSX0-LED-P7-40K-T5M-120-RPA-DBLXD	LED	17692	4000	166	NO	120	POLE MOUNTED 24'-0" A.F.G.	POLE MOUNTED LED SITE LIGHT WITH TYPE 5 MEDIUM DISTRIBUTION. BLACK FINISH. PROVIDE ROUND POLE MOUNTING KIT.
	OR APPROVED EQUAL									
S1	LITHONIA	DSX0-LED-P6-40K-T4M-120-RPA-DBLXD	LED	14507	4000	108	NO	120	POLE MOUNTED 24'-0" A.F.G.	POLE MOUNTED LED SITE LIGHT WITH TYPE 4 MEDIUM DISTRIBUTION. BLACK FINISH. PROVIDE ROUND POLE MOUNTING KIT.
	OR APPROVED EQUAL									
POLE	HAPCO	RTA-25-C-6-B4-BA								25' ROUND TAPERED ALUMINUM POLE WITH 4 BOLT BASE. BLACK POWDER COAT FINISH. SINGLE FIXTURE TO BE SIDE MOUNTED.
	OR APPROVED EQUAL									



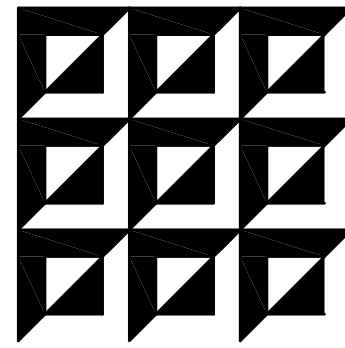
POLE SECTION AT 2.5' ABOVE GRADE
NO SCALE



POLE SECTION AT 8' ABOVE GRADE
NO SCALE

CONSTRUCTION COORDINATION NOTE

THE PARKING LOTS SHALL REMAIN ILLUMINATED FROM 5:00PM TO 11:00PM, MONDAYS THROUGH THURSDAYS. IF CONSTRUCTION OCCURS ON OCCUPIED WEEKDAYS, THE CONTRACTOR SHALL BE RESPONSIBLE FOR PROVIDING TEMPORARY LIGHTING DURING THE ABOVE MENTIONED TIMES. CONSTRUCTION MAY OCCUR ON FRIDAY THROUGH SUNDAY, HOWEVER REQUESTS FOR PREMIUMS (POST-BID) FOR AFTER HOURS/WEEKEND WORK WILL NOT BE COMPENSATED. CONSTRUCTION MAY BE COMPLETED DURING HOLIDAY BREAKS IF COORDINATED AND PRE-APPROVED BY THE OWNER.



ENGINEERING MATRIX, INC.
CONSULTING ENGINEERS
2860 SCHERRER DRIVE, SUITE 640
ST. PETERSBURG, FLORIDA 33716
PH: (727) 973-4606 F: (727) 973-3902
EMAIL: emi@engmatrix.com
CERT. OF AUTHORIZATION NO. 4288
© 2013 Engineering Matrix, Inc.

SEAL:

DRAWING PHASE:

PERMIT DOCUMENTS

ISSUE DATE: 11-26-2019 EMI JOB NO. 19-0560

DRAWING REVISIONS:

ST. PETERSBURG COLLEGE
ST. PETERSBURG/GIBBS CAMPUS
LIGHTING, 5TH AVE PARKING LOT
6605 5TH AVE. N., ST. PETERSBURG, FL 33710

SPC
ST. PETERSBURG
COLLEGE

DRAWN BY: JTH CHECKED BY: CAT

DRAWING TITLE:

ELECTRICAL
LEGENDS
AND DETAILS

SCALE: NORTH:

DRAWING NUMBER:

E0.0

DIVISION 26 ELECTRICAL SPECIFICATIONS

A. GENERAL REQUIREMENTS:

1. BASIC ELECTRICAL REQUIREMENTS SPECIFICALLY APPLICABLE TO DIVISION 26. IT IS THE INTENTION OF THESE SPECIFICATIONS AND DRAWINGS TO CALL FOR FINISHED WORK, TESTED, AND READY FOR OPERATION. WHEREVER THE WORD "PROVIDE" IS USED, IT SHALL MEAN "FURNISH AND INSTALL COMPLETE AND READY FOR USE." MINOR DETAILS NOT USUALLY SHOWN OR SPECIFIED, BUT NECESSARY FOR THE PROPER INSTALLATION AND OPERATION, SHALL BE INCLUDED IN THE WORK, THE SAME AS IF HEREIN SPECIFIED OR SHOWN.
2. ALL MATERIAL TAKE-OFFS FOR THE SITE SHALL BE FIELD MEASURED PRIOR TO BIDS. DRAWINGS ARE DIAGRAMMATIC AND INDICATE THE GENERAL ARRANGEMENT OF SYSTEMS AND WORK INCLUDED IN THE CONTRACT. DRAWINGS ARE NOT TO BE COPIED.
3. AT THE TIME OF EACH SHOP DRAWING SUBMISSION, THE CONTRACTOR SHALL CALL THE ENGINEER'S ATTENTION (IN WRITING) TO, AND PLAINLY MARK ON SHOP DRAWINGS, ANY DEVIATIONS FROM THE CONTRACT DOCUMENTS. ALL SHOP DRAWINGS SHALL BE SUBMITTED TO THE A/E BY CONTRACTOR NO LATER THAN 30 DAYS FROM THE DAY OF CONTRACT AWARD. FAILURE OF THE CONTRACTOR TO SUBMIT SHOP DRAWINGS IN AMPLE TIME FOR CHECKING SHALL NOT ENTITLE HIM TO AN EXTENSION OF CONTRACT TIME, AND NO CLAIM FOR EXTENSION BY REASON OF SUCH DEFAULT WILL BE ALLOWED. SUBMIT ALL DIVISION 26 SUBMITTALS AT ONE (1) TIME IN ONE (1) INTEGRAL GROUP.
4. AT THE CLOSE OF THE JOB, PRIOR TO FINAL REVIEW, FIVE (5) BOUND COPIES OF THE FOLLOWING SHALL BE SUBMITTED BY TRANSMITTAL LETTER TO THE ENGINEER FOR REVIEW AND ACCEPTANCE AND SHALL INCLUDE: EQUIPMENT WARRANTIES, CONTRACTOR'S WARRANTY, PARTS LIST AND MANUALS FOR ALL EQUIPMENT, OPERATING INSTRUCTIONS, WRITTEN INSTRUCTIONS ON MAINTENANCE AND CARE OF THE SYSTEM.
5. MATERIALS AND EQUIPMENT ARE SPECIFIED HEREIN BY A SINGLE OR BY MULTIPLE MANUFACTURERS TO INDICATE QUALITY AND PERFORMANCE REQUIRED. THE DRAWINGS ARE BASED UPON EQUIPMENT SCHEDULED ON DRAWINGS AND SPECIFIED. SUBSTITUTIONS OF OTHER MANUFACTURER'S WILL BE CONSIDERED FOR USE IF, IN THE ENGINEER'S OPINION, THE ITEM REQUESTED FOR SUBSTITUTION IS EQUAL TO THAT SPECIFIED. REQUEST FOR APPROVAL OF SUBSTITUTIONS OR EQUALS SHALL BE MADE PRIOR TO BID AND SHALL BE MADE IN WRITING.
6. PROTECT ALL WORK AND EQUIPMENT UNTIL INSPECTED, TESTED, AND ACCEPTED. PROTECT WORK AGAINST THEFT, INJURY, OR DAMAGE; AND CAREFULLY STORE MATERIAL AND EQUIPMENT RECEIVED ON SITE WHICH ARE NOT IMMEDIATELY INSTALLED. CLOSE OPEN ENDS OF WORK WITH TEMPORARY COVERS OR PLUGS DURING STORAGE AND CONSTRUCTION TO PREVENT ENTRY OF OBSTRUCTING MATERIAL.
7. PROVIDE ALL SCAFFOLDING, RIGGING, HOISTING, AND SERVICES NECESSARY FOR ERECTION AND DELIVERY INTO THE PREMISES OF ANY EQUIPMENT AND APPARATUS FURNISHED. REMOVE SAME FROM PREMISES WHEN NO LONGER REQUIRED.
8. THIS CONTRACTOR SHALL AT ALL TIMES KEEP PREMISES FREE FROM ACCUMULATIONS OF WASTE MATERIALS OR RUBBISH CAUSED BY HIS EMPLOYEES OR WORK. AT COMPLETION OF WORK HE SHALL REMOVE ALL HIS TOOLS, SCAFFOLDING, MATERIALS, AND RUBBISH FROM THE BUILDING AND SITE. HE SHALL LEAVE THE PREMISES AND HIS WORK IN A CLEAN, ORDERLY, AND ACCEPTABLE CONDITION.
9. THIS CONTRACTOR SHALL COMPLY WITH SECTION 107 OF THE CONTRACT WORK HOURS AND SAFETY STANDARDS ACT (40 U.S.C.333), TITLE 29--LABOR, CHAPTER XIII, BUREAU OF STANDARDS, DEPARTMENT OF LABOR, PART 1518--SAFETY AND HEALTH REGULATIONS FOR CONSTRUCTION; AND THAT HIS HOUSEKEEPING AND EQUIPMENT BE MAINTAINED IN SUCH A MANNER THAT THEY COMPLY WITH THE FLORIDA INDUSTRIAL COMMISSION SAFETY CODE AND REGULATIONS OF THE FEDERAL WILLIAMS--STEIGER OCCUPATIONAL SAFETY AND HEALTH ACT OF 1970 (OSHA), WHEREIN IT STATES THAT THE CONTRACTOR SHALL NOT REQUIRE ANY LABORER OR MECHANIC EMPLOYED IN THE PERFORMANCE OF THE CONTRACT TO WORK IN SURROUNDINGS OR UNDER WORKING CONDITIONS WHICH ARE UNSANITARY, HAZARDOUS, OR DANGEROUS TO HIS HEALTH AND SAFETY.
10. CONTRACTOR SHALL PROVIDE A COMPETENT, EXPERIENCED, FULL TIME SUPERINTENDENT WHO IS ACCEPTABLE TO THE ENGINEER AND OWNER, AND WHO IS AUTHORIZED TO MAKE DECISIONS ON BEHALF OF THE CONTRACTOR.

B. MATERIAL AND WORKMANSHIP:

1. ALL MATERIALS AND APPARATUS REQUIRED FOR THE WORK, EXCEPT AS SPECIFICALLY SPECIFIED OTHERWISE, SHALL BE NEW, OF FIRST-CLASS QUALITY, AND SHALL BE FURNISHED, DELIVERED, ERECTED, CONNECTED AND FINISHED IN EVERY DETAIL, AND SHALL BE SO SELECTED AND ARRANGED AS TO FIT PROPERLY INTO THE BUILDING SPACES. WHERE NO SPECIFIC KIND OR QUALITY OF MATERIAL IS GIVEN, A FIRST-CLASS STANDARD ARTICLE AS APPROVED BY THE ENGINEER SHALL BE FURNISHED. ALL EQUIPMENT AND MATERIALS SHALL BE INSTALLED IN ACCORDANCE WITH THE RECOMMENDATIONS OF THE MANUFACTURER. THIS INCLUDES THE PERFORMANCE OF SUCH TESTS AS THE MANUFACTURER RECOMMENDS.

C. FOUNDATIONS, SUPPORTS, PIERS, ATTACHMENTS

1. THIS CONTRACTOR SHALL FURNISH AND INSTALL ALL NECESSARY FOUNDATIONS, SUPPORTS, PADS, BASES AND PIERS REQUIRED FOR ALL EQUIPMENT FURNISHED UNDER THIS DIVISION, AND SHALL SUBMIT DRAWINGS TO THE ARCHITECT AND ENGINEER FOR APPROVAL BEFORE PURCHASE, FABRICATION OR CONSTRUCTION OF SAME.
- D. REGULATORY REQUIREMENTS
1. CONTRACTOR SHALL CONFORM TO APPLICABLE CODES AND STANDARDS. APPLICABLE CODES SHALL BE THOSE ADOPTED BY THE AUTHORITY HAVING JURISDICTION AT THE TIME PROJECT IS BID.
 2. ALL MATERIAL FURNISHED AND ALL WORK INSTALLED SHALL COMPLY WITH THE FOLLOWING CODES AS THEY APPLY TO THIS PROJECT:
 - a. ANSI/NFPA 70--NATIONAL ELECTRICAL CODE
 - b. NFPA 101--LIFE SAFETY CODE
 - c. REGULATIONS OF THE FLORIDA INDUSTRIAL COMMISSION CONCERNING SAFETY.
 - d. APPLICABLE COUNTY, STATE, AND LOCAL BUILDING CODES.
 - e. LOCAL AND STATE FIRE MARSHAL RULES AND REGULATIONS.
 - f. OCCUPATIONAL SAFETY AND HEALTH AGENCY STANDARDS (OSHA).
 - g. FLORIDA BUILDING CODE 6TH EDITION.

E. PERMITS, FEES AND INSPECTIONS:

1. THE CONTRACTOR SHALL GIVE ALL NECESSARY NOTICES, OBTAIN ALL PERMITS AND PAY ALL GOVERNMENT FEES, SALES TAXES AND OTHER COSTS, INCLUDING UTILITY CONNECTIONS OR EXTENSIONS, IN CONNECTION WITH THIS WORK; FILE ALL NECESSARY APPROVALS OF ALL GOVERNMENTAL DEPARTMENTS HAVING JURISDICTION.
2. OBTAIN ALL REQUIRED CERTIFICATES OF INSPECTION FOR HIS WORK AND DELIVER TO THE OWNER/ENGINEER THE SAME CERTIFICATES BEFORE REQUEST FOR ACCEPTANCE AND FINAL PAYMENT FOR THE WORK.
3. THE CONTRACTOR SHALL INCLUDE IN THE WORK, WITHOUT EXTRA COST TO THE OWNER, ANY LABOR, MATERIALS, SERVICES, APPARATUS AND DRAWINGS REQUIRED TO COMPLY WITH ALL APPLICABLE LAWS, ORDINANCES, RULES AND REGULATIONS.
4. THE CONTRACTOR SHALL INFORM THE ENGINEER OF ANY WORK OR MATERIALS WHICH CONFLICT WITH ANY OF THE APPLICABLE CODES, STANDARDS, LAWS AND REGULATIONS BEFORE SUBMITTING HIS BID.

F. PROJECT/SITE CONDITIONS:

1. INSTALL WORK IN LOCATIONS SHOWN ON DRAWINGS, UNLESS PREVENTED BY PROJECT CONDITIONS.
2. PREPARE DRAWINGS SHOWING PROPOSED REARRANGEMENT OF WORK TO MEET PROJECT CONDITIONS, INCLUDING CHANGES TO WORK SPECIFIED IN OTHER SECTIONS. OBTAIN PERMISSION OF ARCHITECT/ENGINEER BEFORE PROCEEDING.
3. THE CONTRACTOR SHALL INFORM THE ENGINEER OF ANY WORK OR MATERIALS WHICH CONFLICT WITH ANY OF THE APPLICABLE CODES, STANDARDS, LAWS AND REGULATIONS BEFORE SUBMITTING HIS BID.
4. THE SCOPE OF THE WORK INCLUDED UNDER THIS DIVISION OF THE SPECIFICATIONS SHALL INCLUDE COMPLETE ELECTRICAL SYSTEMS AS SHOWN ON THE PLANS AND AS SPECIFIED HEREIN. THE GENERAL CONDITIONS AND SPECIAL CONDITIONS OF THESE SPECIFICATIONS SHALL FORM A PART AND BE INCLUDED UNDER THIS SECTION OF THE SPECIFICATIONS. PROVIDE ALL SUPERVISION, LABOR, MATERIAL, EQUIPMENT, MACHINERY, FACTORY TRAINED PERSONNEL, AND ANY AND ALL OTHER ITEMS NECESSARY TO COMPLETE THE ELECTRICAL SYSTEMS. ALL ITEMS OF EQUIPMENT ARE SPECIFIED IN THE SINGULAR; HOWEVER, PROVIDE AND INSTALL THE NUMBER OF ITEMS OF EQUIPMENT AS INDICATED ON THE DRAWINGS, AND AS REQUIRED FOR COMPLETE SYSTEMS.

G. PREPARATION, SEQUENCING AND SCHEDULING

1. PERFORM WORK IN SEQUENCE UNDER PROVISIONS OF THE CONTRACT WITH THE OWNER.
2. PREPARATION
 - a. DISCONNECT ELECTRICAL SYSTEMS SCHEDULED FOR REMOVAL.
 - b. PROVIDE TEMPORARY WIRING AND CONNECTIONS TO MAINTAIN EXISTING SYSTEMS IN SERVICE DURING CONSTRUCTION. WHEN WORK MUST BE PERFORMED ON ENERGIZED EQUIPMENT OR CIRCUITS, USE PERSONNEL EXPERIENCED IN SUCH OPERATIONS.
 - c. EXISTING ELECTRICAL SERVICE AND DISTRIBUTION SYSTEM: MAINTAIN ALL EXISTING SYSTEMS IN SERVICE AT ALL TIMES EXCEPT AS REQUIRED FOR NEW CONNECTIONS.

H. GUARANTEES:

1. THE CONTRACTOR SHALL PROVIDE A ONE YEAR WRITTEN GUARANTEE FOR ALL MATERIALS AND LABOR FROM THE DATE OF SUBSTANTIAL COMPLETION. GUARANTEE SHALL COVER ALL LABOR AND MATERIAL TO REPLACE DEFECTIVE MATERIAL AND WORKMANSHIP, AND ENSURE PROPER OPERATION OF ALL SYSTEMS.

I. LICENSE:

1. THE CONTRACTING FIRM FOR THE ELECTRICAL AND SYSTEMS INSTALLATION SHALL BE LICENSED BY THE STATE OF FLORIDA AND THE LOCAL AUTHORITIES, REGULARLY ENGAGED IN THE INSTALLATION OF ELECTRICAL SYSTEMS AND OTHER RELATED EQUIPMENT. THE CONTRACTING FIRM SHALL BE FAMILIAR WITH ALL LOCAL

- CONDITIONS INCLUDING INTERPRETATIONS, CODES AND SHALL HAVE AT LEAST 5 YEARS OF SUCCESSFUL INSTALLATION EXPERIENCE ON SIMILAR PROJECTS OF THE SAME MAGNITUDE AND SCOPE.
2. THE CONTRACTING FIRM SHALL LIST AT LEAST THREE PROJECTS IT HAS SUCCESSFULLY COMPLETED OVER THE LAST FIVE YEARS FOR PROOF OF EXPERIENCE OF THIS CALIBER. THIS LIST SHALL BE INCLUDED WITH SUBMITTALS FOR REVIEW BY OWNER/ENGINEER. THE CONTRACTING FIRM SHALL HOLD A FLORIDA STATE CERTIFIED ELECTRICAL CONTRACTOR LICENSE FOR THIS PROJECT. THE CONTRACTING FIRM FOR THE FIRE ALARM SYSTEM SHALL BE A CERTIFIED "EF" INSTALLER.

J. AS-BUILT DRAWINGS:

1. THIS CONTRACTOR SHALL PROVIDE AS-BUILT DRAWINGS BEFORE FINAL PAYMENT WILL BE ISSUED.

K. CONDUIT REQUIREMENTS:

1. PRODUCTS:
 - a. MINIMUM SIZE: 3/4 INCH HOMERUNS, ONLY WITH A MAXIMUM OF 3-PHASE CONDUCTORS, THREE (3) NEUTRALS, AND ONE (1) EQUIPMENT GROUND. NO SHARED NEUTRALS.
 - b. UNDERGROUND INSTALLATIONS USE THICKWALL NONMETALLIC CONDUIT, SCHEDULE 40 PVC.
 - c. INSTALL RIGID STEEL, LONG RADIUS ELBOWS FOR CONDUITS LARGER THAN 1". PAINT UNDER SLAB CONDUIT OR POURED-IN CONCRETE WITH A COAT OF BITUMASTIC, CONTINUOUSLY AND UP THROUGH PENETRATION OF CONCRETE SLABS.
 - d. OUTDOOR LOCATIONS, ABOVE GRADE, CONCEALED: USE RIGID ALUMINUM AND LIQUIDTIGHT FLEXIBLE METAL CONDUIT.
 - e. WET AND DAMP LOCATIONS: USE RIGID STEEL AND LIQUIDTIGHT FLEXIBLE METAL CONDUIT.
 - f. DRY LOCATIONS:
 - f.1. CONCEALED: USE RIGID STEEL, INTERMEDIATE METAL CONDUIT, AND ELECTRICAL METALLIC TUBING.
 - f.2. EXPOSED: USE RIGID STEEL.
 - g. METAL CONDUIT: RIGID STEEL CONDUIT SHALL COMPLY WITH ANSI C80.1., FITTINGS AND CONDUIT BODIES SHALL COMPLY WITH ANSI/NEMA FB 1; ALL STEEL FITTINGS.
 - h. FLEXIBLE METAL CONDUIT: SHALL BE INTERLOCKED STEEL CONSTRUCTION, FITTINGS SHALL COMPLY WITH ANSI/NEMA FB 1.
 - i. LIQUIDTIGHT FLEXIBLE METAL CONDUIT: SHALL BE INTERLOCKED STEEL CONSTRUCTION WITH PVC JACKET, FITTINGS SHALL COMPLY WITH ANSI/NEMA FB 1.
 - j. ELECTRICAL METALLIC TUBING (EMT): SHALL BE ANSI C80.3; GALVANIZED TUBING. FITTINGS AND CONDUIT BODIES SHALL COMPLY WITH ANSI/NEMA FB 1; STEEL SET SCREW TYPE.
 - k. NONMETALLIC CONDUIT SHALL BE NEMA TC 2; SCHEDULE 40 PVC, FITTINGS AND CONDUIT BODIES: SHALL COMPLY WITH NEMA TC 3.
2. EXECUTION:
 - a. INSTALL CONDUIT IN ACCORDANCE WITH NECA "STANDARD OF INSTALLATION."
 - b. ARRANGE SUPPORTS TO PREVENT MISALIGNMENT DURING WIRING INSTALLATION.
 - c. SUPPORT CONDUIT USING COATED STEEL STRAPS, LAY-IN ADJUSTABLE HANGERS, CLEVIS HANGERS, AND SPLIT HANGERS.
 - d. GROUP RELATED CONDUITS; SUPPORT USING CONDUIT RACK. CONSTRUCT RACK USING STEEL CHANNEL; PROVIDE SPACE ON EACH FOR 25 PERCENT ADDITIONAL CONDUITS.
 - e. INSTALL NONMETALLIC CONDUIT IN ACCORDANCE WITH MANUFACTURER'S INSTRUCTIONS. JOIN NONMETALLIC CONDUIT USING CEMENT AS RECOMMENDED BY MANUFACTURER. WIPE NONMETALLIC CONDUIT DRY AND CLEAN BEFORE JOINING. APPLY FULL EVEN COAT OF CEMENT TO ENTIRE AREA INSERTED IN FITTING. ALLOW JOINT TO CURE FOR 20 MINUTES, MINIMUM.
 - f. INSTALL NO MORE THAN EQUIVALENT OF FOUR 90--DEGREE BENDS BETWEEN BOXES. USE CONDUIT BODIES TO MAKE SHARP CHANGES IN DIRECTION, AS AROUND BEAMS, USE HYDRAULIC ONE--SHOT BENDER OR FACTORY ELBOWS FOR BENDS IN METAL CONDUIT LARGER THAN 2 INCH SIZE.
 - g. AVOID MOISTURE TRAPS; PROVIDE JUNCTION BOX WITH DRY FITTING AT LOW POINTS IN CONDUIT SYSTEM.
 - h. FLEXIBLE METAL CONDUIT SHALL NOT BE OVER SIX FEET (6') LONG. MOTORS THREE FEET (3') LONG.
 - i. LIQUID TIGHT FLEXIBLE CONDUIT SHALL BE USED IN WET LOCATION AND MECHANICAL ROOM FOR FLEXIBLE CONNECTIONS ONLY.
 - j. INSTALL INSULATED BUSHING ON ALL CONDUITS.
 - k. GROUND AND BOND CONDUIT PER NEC. INSTALL GROUNDED METAL INSULATED BUSHING WITH LUG ON ALL MAINS, SUB--FEEDERS, TRANSFER SWITCHES, SWITCHBOARDS, PANELBOARDS, TRANSFORMERS, CHILLERS, DISCONNECTS, AND EQUIPMENT RATED AT 100 AMPS AND ABOVE.
 - l. INSTALL CONDUIT TO PRESERVE FIRE RESISTANCE RATING OF PARTITIONS AND OTHER ELEMENTS, USING MATERIALS AND METHODS THAT ARE UL LISTED AND TESTED.

L. BUILDING WIRE AND CABLE:

1. PRODUCTS:
 - a. POWER CONDUCTOR (SINGLE CONDUCTOR INSULATED WIRE): SHALL BE COPPER CONDUCTOR, 600 VOLT INSULATION, TYPE THHN/THWN, XHHW MATERIAL RATED 90 DEGREES C, #12 AWG MINIMUM.
 - b. CLASS 1 REMOTE CONTROL AND SIGNAL CABLE SHALL BE COPPER CONDUCTOR, 600 VOLT INSULATION TYPE TFFN, THHN.
 - c. CLASS 2 OR 3 REMOTE CONTROL AND SIGNAL, NEMA/ICEA WC5 CABLE SHALL BE COPPER CONDUCTOR, 300 VOLT INSULATION, THERMOPLASTIC INSULATED CABLE, INDIVIDUAL INSULATED CONDUCTORS TWISTED TOGETHER, METALLIC SHIELDED AND COVERED WITH PVC JACKET WHEN INSTALLED IN METAL RACEWAY.
 - d. CLASS 1 AND NON POWER--LIMITED FIRE PROTECTIVE SIGNALING CABLES SHALL BE COPPER CONDUCTOR, 600 VOLT INSULATION TYPE TFFN, THHN INSTALLED IN METAL RACEWAY.
2. EXECUTION:
 - a. USE SOLID CONDUCTOR FOR FEEDERS AND BRANCH CIRCUITS 12 AWG AND SMALLER.
 - b. USE STRANDED CONDUCTORS FOR CONTROL CIRCUITS AND FOR FEEDER AND BRANCH CIRCUITS NO. 8 AND LARGER.
 - c. USE CONDUCTOR NOT SMALLER THAN 14 AWG FOR CONTROL CIRCUITS.
 - d. ALL CONDUCTORS SIZE #6 AND SMALLER SHALL BE COLOR CODED INSULATION. EQUIPMENT GROUNDING CONDUCTORS #6 AND SMALLER TO HAVE GREEN OR BARE EXTERIOR FINISH PER NEC 250-119(A). GROUNDED CONDUCTORS (NEUTRAL) #6 AND SMALLER TO HAVE A WHITE OR GREY EXTERIOR FINISH PER NEC 200-6. CONDUCTORS SIZE #4 AND LARGER SHALL BE COLOR CODE BY USE OF COLORED PLASTIC TAPE APPLIED WITHIN 6" OF EACH CONDUCTOR END. ALL COLOR CODING SHALL BE WITH THE SAME COLOR BEING USED WITH ITS RESPECTIVE PHASE OR BUS THROUGH THE ENTIRE JOB AS FOLLOWS:

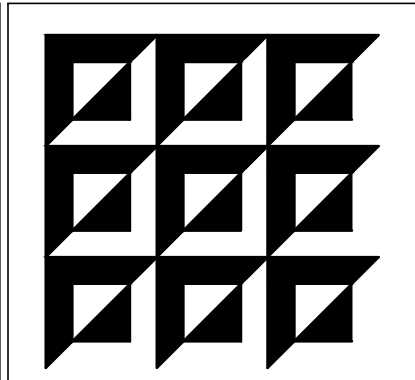
208/120 VOLTS	277/480 VOLTS
PHASE A--BLACK,	PHASE A--BROWN
PHASE B--RED	PHASE B--ORANGE
PHASE C--BLUE,	PHASE C--YELLOW
NEUTRAL--WHITE	NEUTRAL--GRAY
GROUND--GREEN	GROUND--GREEN

- e. GROUNDING CONDUCTORS SHALL BE IDENTIFIED WITH A CONTINUOUS OUTER FINISH THAT IS EITHER GREEN, OR GREEN WITH ONE OR MORE YELLOW STRIPE.
- f. USE SUITABLE WIRE PULLING LUBRICANT FOR BUILDING WIRE 4 AWG AND LARGER.
- g. CLEAN CONDUCTOR SURFACES BEFORE INSTALLING LUGS AND CONNECTORS.
- h. MAKE SPLICES, TAPS, AND TERMINATIONS TO CARRY FULL AMPACITY OF CONDUCTORS WITH NO PERCEPTIBLE TEMPERATURE RISE.
- i. USE SPLIT BOLT CONNECTORS FOR COPPER CONDUCTOR SPLICES AND TAPS, 6 AWG AND LARGER. TAPE UNINSULATED CONDUCTORS AND CONNECTOR WITH ELECTRICAL TAPE TO 150 PERCENT OF INSULATION RATING OF CONDUCTOR.
- j. USE SOLDERLESS PRESSURE CONNECTORS WITH INSULATING COVERS FOR COPPER CONDUCTOR SPLICES AND TAPS, 8 AWG AND SMALLER.
- k. USE INSULATED SPRING WIRE CONNECTORS WITH PLASTIC CAPS FOR COPPER CONDUCTOR SPLICES AND TAPS, 10 AWG AND SMALLER.
- l. SPLICE ONLY IN ACCESSIBLE JUNCTION BOXES.

M. BOXES:

1. PRODUCTS:
 - a. SHEET METAL OUTLET BOXES: ANSI/NEMA OS 1, GALVANIZED STEEL.
 - b. PULL AND JUNCTION BOXES: NEMA OS 1, GALVANIZED STEEL.
 - c. SURFACE--MOUNTED CAST METAL BOX: NEMA 250, TYPE 4; FLAT--FLANGED, SURFACE--MOUNTED JUNCTION BOX, CAST ALUMINUM WITH GROUND FLANGE, NEOPRENE GASKET, AND STAINLESS STEEL COVER SCREWS.
 2. EXECUTION:
 - a. INSTALL ELECTRICAL BOXES AS SHOWN ON DRAWINGS, AND AS REQUIRED FOR SPLICES, TAPS, WIRE PULLING, EQUIPMENT CONNECTIONS AND COMPLIANCE WITH REGULATORY REQUIREMENTS.
 - b. INSTALL BOXES TO PRESERVE FIRE RESISTANCE RATING OF PARTITIONS AND OTHER ELEMENTS, USING MATERIALS AND METHODS THAT ARE UL LISTED AND TESTED.
- N. GROUNDING AND BONDING:
1. EXECUTION:
 - a. PROVIDE BONDING TO MEET REGULATORY REQUIREMENTS.
 - b. BOND TOGETHER EACH METALLIC RACEWAY, PIPE, AND OTHER METAL OBJECTS.
 - c. EQUIPMENT GROUNDING CONDUCTOR: PROVIDE SEPARATE, INSULATED CONDUCTOR WITHIN EACH FEEDER AND BRANCH CIRCUIT RACEWAY. TERMINATE EACH END ON SUITABLE LUG, BUS, OR BUSHING.
 - d. INSPECT GROUNDING AND BONDING SYSTEM CONDUCTORS AND CONNECTIONS FOR TIGHTNESS AND PROPER INSTALLATION.
- O. SUPPORTING DEVICES:
1. MATERIAL:

- a. SUPPORT CHANNEL: GALVANIZED OR PAINTED STEEL OR ALUMINUM (INTERIOR). ALUMINUM OR STAINLESS STEEL (EXTERIOR).
 - b. HARDWARE: ALL EXTERIOR HARDWARE (NUTS, BOLTS, SCREWS, WASHERS, ETC.) SHALL BE STAINLESS STEEL.
2. INSTALLATION:
- a. FASTEN HANGER RODS, CONDUIT CLAMPS, OUTLETS, AND JUNCTION BOXES TO BUILDING STRUCTURE USING EXPANSION ANCHORS, BEAM CLAMPS, OR SPRING STEEL CLIPS. ALL SUPPORTING DEVICES AND HARDWARE SHALL BE UL LISTED FOR THAT PURPOSE AND PER OTHER SECTIONS OF THIS SPECIFICATION. IN NO CASE WILL THE SUPPORT DEVICE BE LESS THAN THIS SPECIFICATION OR THE MANUFACTURER'S REQUIREMENTS AND STANDARDS FOR THE EQUIPMENT/MATERIAL TO BE SUPPORTED.
 - b. USE TOGGLE BOLTS OR HOLLOW WALL FASTENERS IN HOLLOW MASONRY, PLASTER, OR GYPSUM BOARD PARTITIONS AND WALLS; EXPANSION ANCHORS OR PRESET INSERTS IN SOLID MASONRY WALLS; SELF--DRILLING ANCHORS OR EXPANSION ANCHOR ON CONCRETE SURFACES; SHEET METAL SCREWS IN SHEET METAL STUDS; AND WOOD SCREWS IN WOOD CONSTRUCTION.
 - c. ALL RACEWAYS SHALL BE INDEPENDENTLY SUPPORTED TO BUILDING STRUCTURE. DO NOT USE BOXES WITH ATTACHED CONDUIT BRACKETS AS SOLE CONDUIT SUPPORT.
 - d. DO NOT FASTEN SUPPORTS TO PIPING, DUCTWORK, MECHANICAL EQUIPMENT, OR CONDUIT.
 - e. DO NOT USE POWDER--ACTUATED ANCHORS.
 - f. DO NOT DRILL STRUCTURAL STEEL MEMBERS. LIMITED TO STRAPPING CONDUIT. ALL OTHER HOLES SHALL HAVE STRUCTURAL ENGINEER'S APPROVAL PRIOR TO CUTTING OR DRILLING.
 - g. FABRICATE SUPPORTS FROM STRUCTURAL STEEL OR STEEL CHANNEL, RIGIDLY WELDED OR BOLTED TO PRESENT A NEAT APPEARANCE. USE HEXAGON HEAD BOLTS WITH SPRING LOCK WASHERS UNDER ALL NUTS.
 - h. SAFETY OF OVERHEAD MATERIALS, FIXTURES, AND EQUIPMENT (REFERENCE SPECIFICATION SECTION 'S', P. ELECTRICAL IDENTIFICATION:
1. PRODUCTS:
 - a. NAMEPLATES: ENGRAVED THREE--LAYER LAMINATED PLASTIC, BLACK LETTERS ON A WHITE BACKGROUND FOR NORMAL POWER, RED LETTERS FOR EMERGENCY/GENERATOR POWER.
 - b. WIRE AND CABLE MARKERS: CLOTH MARKERS, SPLIT SLEEVE OR TUBING TYPE.
 2. EXECUTION:
 - a. DEGREASE AND CLEAN SURFACES TO RECEIVE NAMEPLATES.
 - b. INSTALL NAMEPLATES PARALLEL TO EQUIPMENT LINES.
 - c. SECURE NAMEPLATES TO EQUIPMENT FRONTS USING SCREWS OR RIVETS. SECURE NAMEPLATE TO INSIDE FACE OF RECESSED PANELBOARD DOORS IN FINISHED LOCATIONS.



ENGINEERING MATRIX, INC.
CONSULTING ENGINEERS
2860 SCHUBERT DRIVE, SUITE 640
ST. PETERSBURG, FLORIDA 33716
PH: (727) 979-4608 F: (727) 979-5902
EMAIL: ematrix@engmatrix.com
CERT. OF AUTHORIZATION NO. 6388
© 2013 Engineering Matrix, Inc.

SEAL:

DRAWING PHASE:

PERMIT DOCUMENTS

ISSUE DATE: EMI JOB NO.

11-26-2019 19-0560

DRAWING REVISIONS:

ST. PETERSBURG COLLEGE
ST. PETERSBURG/GIBBS CAMPUS
LIGHTING, 5TH AVE PARKING LOT
6605 5TH AVE. N., ST. PETERSBURG, FL 33710

SPC
ST. PETERSBURG
COLLEGE

DRAWN BY: JTH CHECKED BY: CAT

DRAWING TITLE:

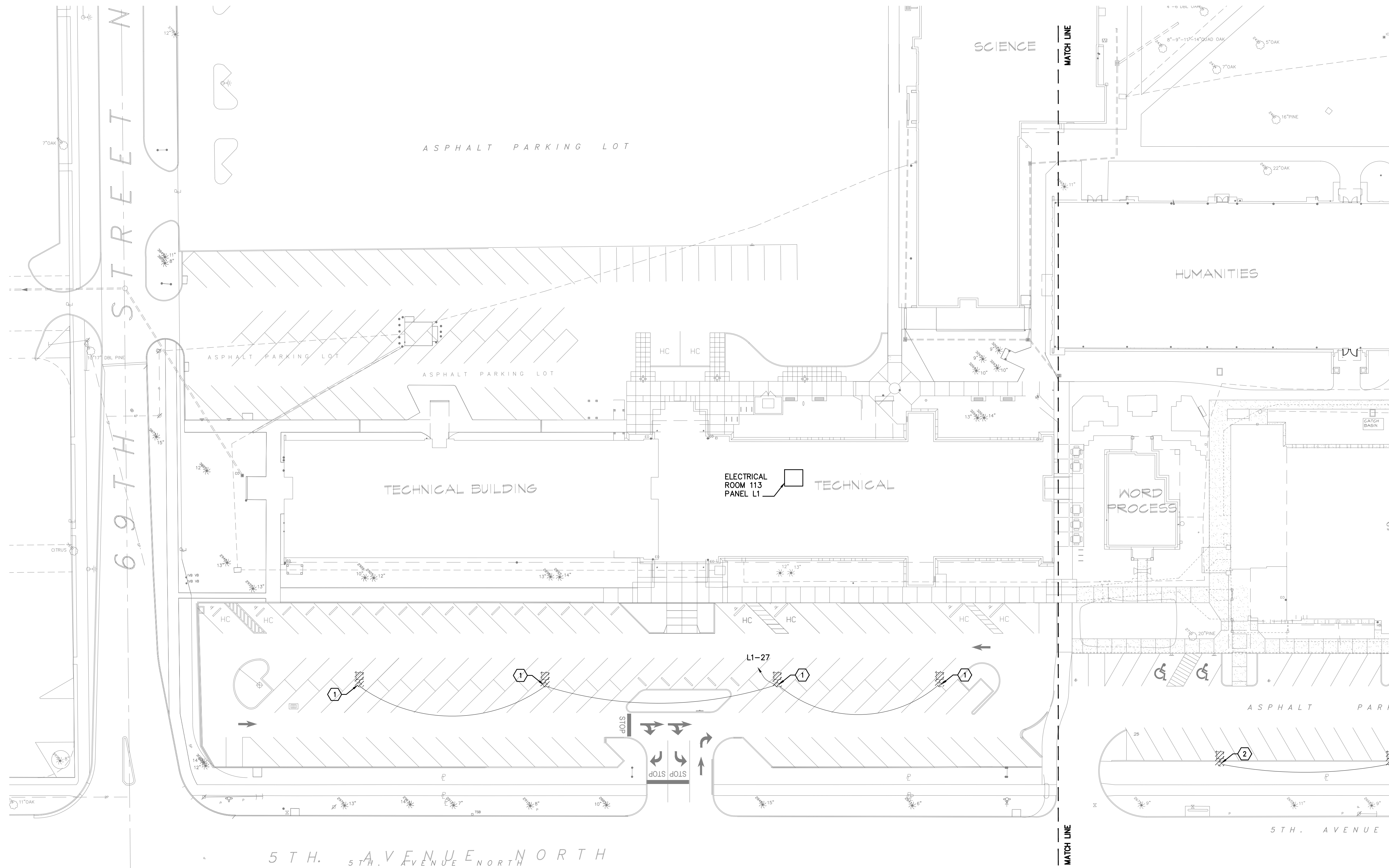
ELECTRICAL
SPECIFICATIONS

SCALE: NORTH:

DRAWING NUMBER:

E0.1

11/25/2019 10:06:14 AM N:_2019\19-0560 SPC Gibbs Parking Lot Lighting\Electrical\19-0560_E1.1-E1.2_Site Lighting-DEMO.dwg



SITE DEMOLITION PLAN WEST - LIGHTING
SCALE: 1" = 30'-0"

GENERAL NOTES

- ELECTRICAL CONTRACTOR SHALL BE RESPONSIBLE FOR COORDINATION OF INSTALLATION AND DEMOLITION WORK WITH OTHER TRADES TO AVOID CONFLICTS. ELECTRICAL EQUIPMENT SCHEDULED FOR DEMOLITION SHALL BE PRESENTED TO OWNER FOR FIRST RIGHT OF REFUSAL. SHOULD OWNER REFUSE, ALL EQUIPMENT SHALL BE DISPOSED OF IN SAFE LEGAL MANNER.
- ALL UNUSED OR ABANDONED ELECTRICAL COMPONENTS ASSOCIATED WITH NEW CONSTRUCTION SHALL BE REMOVED AND DISPOSED OF IN A SAFE AND LEGAL MANNER.
- DRAWINGS ARE BASED ON FIELD OBSERVATION AND EXISTING RECORD DOCUMENTS. REPORT DISCREPANCIES TO THE ENGINEER BEFORE DISTURBING EXISTING INSTALLATION.
- ALL EXISTING TO REMAIN CIRCUITRY SHALL BE MAINTAINED AFTER THE DEMOLITION OF EQUIPMENT. PROVIDE CONDUIT, JUNCTION BOXES, CONDUCTORS, ETC. TO MAINTAIN CIRCUITS TO EXISTING TO REMAIN DEVICES AND EQUIPMENT.
- EXISTING SITE LIGHTING CONTROLS SHALL REMAIN.
- ALL LIGHT FIXTURE BULBS FROM THE DEMOLISHED FIXTURES SHALL BE CAREFULLY REMOVED AND HANDED OVER THE OWNER.

KEYED NOTES

- CONTRACTOR SHALL DEMOLISH EXISTING LIGHT POLE, FIXTURE AND RAISED CONCRETE BASE. CUT ASPHALT AS REQUIRED.
- CONTRACTOR SHALL DEMOLISH EXISTING LIGHT POLE, FIXTURE AND CONCRETE BASE.

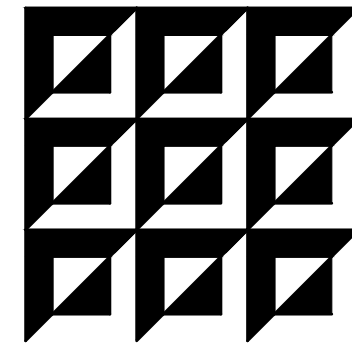
NOTE: NOT ALL KEYED NOTES ABOVE MAY APPEAR ON THIS SHEET.

BID ALTERNATE

PROVIDE DEDUCTIVE ALTERNATE TO RE-USE EXISTING WIRING TO POLE LOCATIONS IN LIEU OF NEW WIRING. DEDUCTIVE ALTERNATE PRICING SHALL BE PROVIDED AS A SINGLE LINE ITEM PER CIRCUIT.

SITE DEMOLITION NOTES

SAW CUTS IN EXISTING SLABS SHALL BE PERPENDICULAR TO THE SIDEWALK. ALL SITE SURFACES SHALL BE REPAIRED AND RESTORED TO THEIR EXISTING CONDITION, INCLUDING RE-STRIPING OF PARKING LOT AREAS, AS REQUIRED.



ENGINEERING MATRIX, INC.
CONSULTING ENGINEERS
2860 SCHERRER DRIVE, SUITE 640
ST. PETERSBURG, FLORIDA 33716
PH: (727) 973-4606 F: (727) 973-3902
EMAIL: em@emmatrix.com
CERT. OF AUTHORIZATION NO. 4288
© 2019 Engineering Matrix, Inc.

SEAL:

DRAWING PHASE:

PERMIT DOCUMENTS

ISSUE DATE:	EMI JOB NO.
11-26-2019	19-0560

DRAWING REVISIONS:

ST. PETERSBURG COLLEGE
ST. PETERSBURG/GIBBS CAMPUS
LIGHTING, 5TH AVE PARKING LOT
6605 5TH AVE. N., ST. PETERSBURG, FL 33710

SPC
ST. PETERSBURG
COLLEGE

DRAWN BY: JTH CHECKED BY: CAT

DRAWING TITLE:

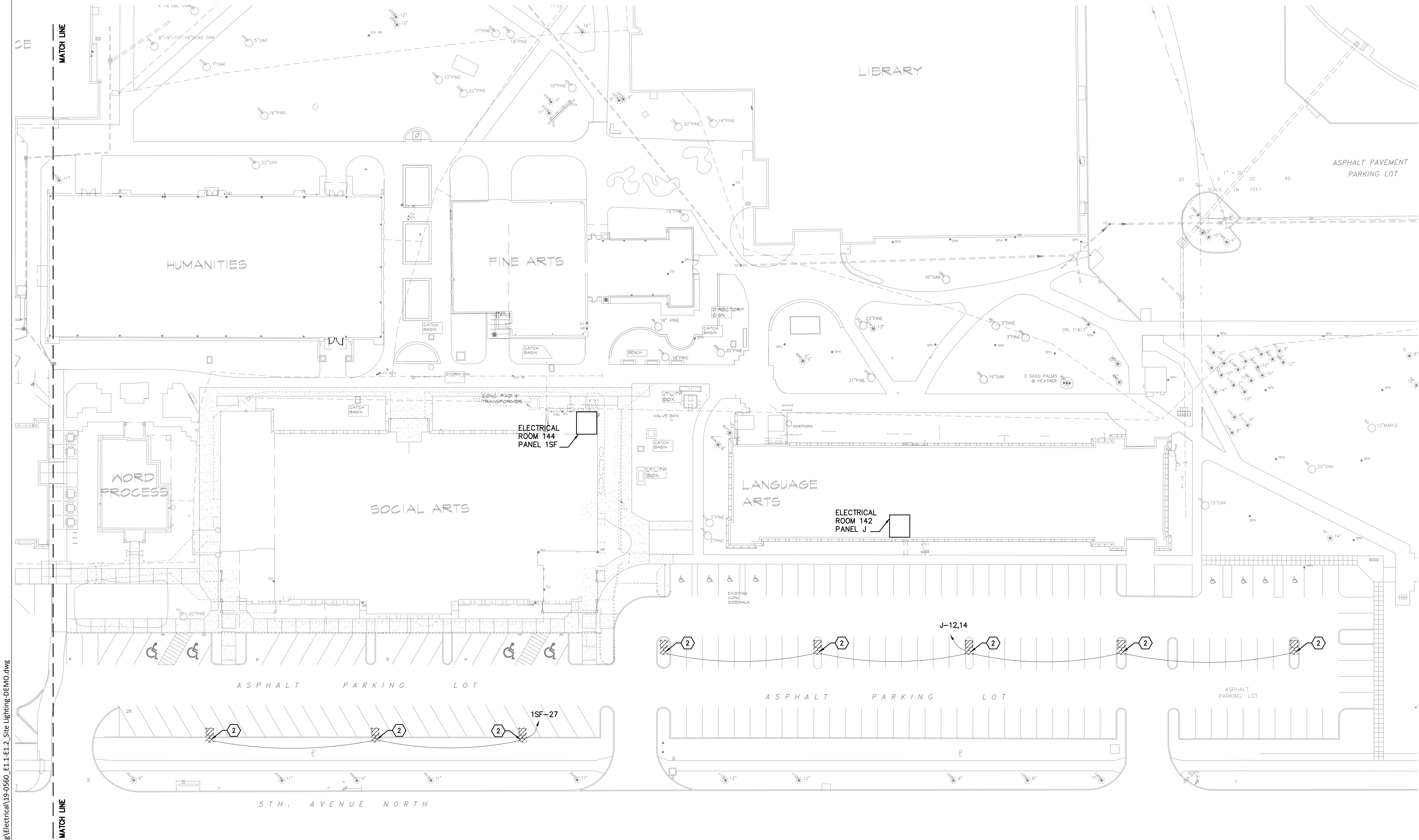
**SITE
DEMOLITION
PLAN WEST -
LIGHTING**

SCALE:	NORTH:
1" = 30' - 0"	

DRAWING NUMBER:

E1.1

11/25/2019 10:06:14 AM N:_2019\19-0560 SPC Gibbs Parking Lot Lighting\Electrical\19-0560_E1.1.E1.2_Site Lighting-DEMO.dwg



SITE DEMOLITION PLAN EAST - LIGHTING
SCALE: 1" = 30'-0"

GENERAL NOTES

1. ELECTRICAL CONTRACTOR SHALL BE RESPONSIBLE FOR COORDINATION OF INSTALLATION AND DEMOLITION WORK WITH OTHER TRADES TO AVOID CONFLICTS. ELECTRICAL EQUIPMENT SCHEDULED FOR DEMOLITION SHALL BE PRESENTED TO OWNER FOR FIRST RIGHT OF REFUSAL. SHOULD OWNER REFUSE, ALL EQUIPMENT SHALL BE DISPOSED OF IN SAFE LEGAL MANNER.
2. ALL UNUSED OR ABANDONED ELECTRICAL COMPONENTS ASSOCIATED WITH NEW CONSTRUCTION SHALL BE REMOVED AND DISPOSED OF IN A SAFE AND LEGAL MANNER.
3. DRAWINGS ARE BASED ON FIELD OBSERVATION AND EXISTING RECORD DOCUMENTS. REPORT DISCREPANCIES TO THE ENGINEER BEFORE DISTURBING EXISTING INSTALLATION.
4. ALL EXISTING TO REMAIN CIRCUITRY SHALL BE MAINTAINED AFTER THE DEMOLITION OF EQUIPMENT. PROVIDE CONDUIT, JUNCTION BOXES, CONDUCTORS, ETC. TO MAINTAIN CIRCUITS TO EXISTING TO REMAIN DEVICES AND EQUIPMENT.
5. EXISTING SITE LIGHTING CONTROLS SHALL REMAIN.
6. ALL LIGHT FIXTURE BULBS FROM THE DEMOLISHED FIXTURES SHALL BE CAREFULLY REMOVED AND HANDED OVER TO THE OWNER.

KEYED NOTES

- 1 CONTRACTOR SHALL DEMOLISH EXISTING LIGHT POLE, FIXTURE AND RAISED CONCRETE BASE. CUT ASPHALT AS REQUIRED.
- 2 CONTRACTOR SHALL DEMOLISH EXISTING LIGHT POLE, FIXTURE AND CONCRETE BASE.

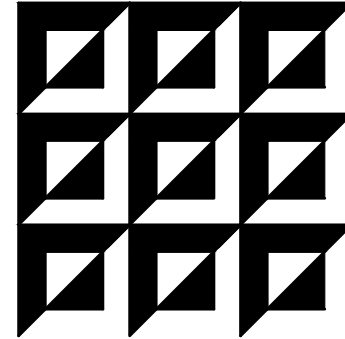
NOTE: NOT ALL KEYED NOTES ABOVE MAY APPEAR ON THIS SHEET.

BID ALTERNATE

PROVIDE DEDUCTIVE ALTERNATE TO RE-USE EXISTING WIRING TO POLE LOCATIONS IN LIEU OF NEW WIRING. DEDUCTIVE ALTERNATE PRICING SHALL BE PROVIDED AS A SINGLE LINE ITEM PER CIRCUIT.

SITE DEMOLITION NOTES

SAW CUTS IN EXISTING SLABS SHALL BE PERPENDICULAR TO THE SIDEWALK. ALL SITE SURFACES SHALL BE REPAIRED AND RESTORED TO THEIR EXISTING CONDITION, INCLUDING RE-STRIPING OF PARKING LOT AREAS, AS REQUIRED.



ENGINEERING MATRIX, INC.
CONSULTING ENGINEERS
2860 SCHERRER DRIVE, SUITE 640
ST. PETERSBURG, FLORIDA 33716
PH: (727) 973-4608 F: (727) 973-3902
EMAIL: ematrix@engmatrix.com
CERT. OF AUTHORIZATION NO. 4288
© 2019 Engineering Matrix, Inc.

SEAL:

DRAWING PHASE:
PERMIT DOCUMENTS

ISSUE DATE:	EMI JOB NO.
11-26-2019	19-0560

DRAWING REVISIONS:

ST. PETERSBURG COLLEGE
ST. PETERSBURG/GIBBS CAMPUS
LIGHTING, 5TH AVE PARKING LOT
6605 5TH AVE. N., ST. PETERSBURG, FL 33710

SPC
ST. PETERSBURG
COLLEGE

DRAWN BY: JTH CHECKED BY: CAT

DRAWING TITLE:

**SITE
DEMOLITION
PLAN EAST -
LIGHTING**

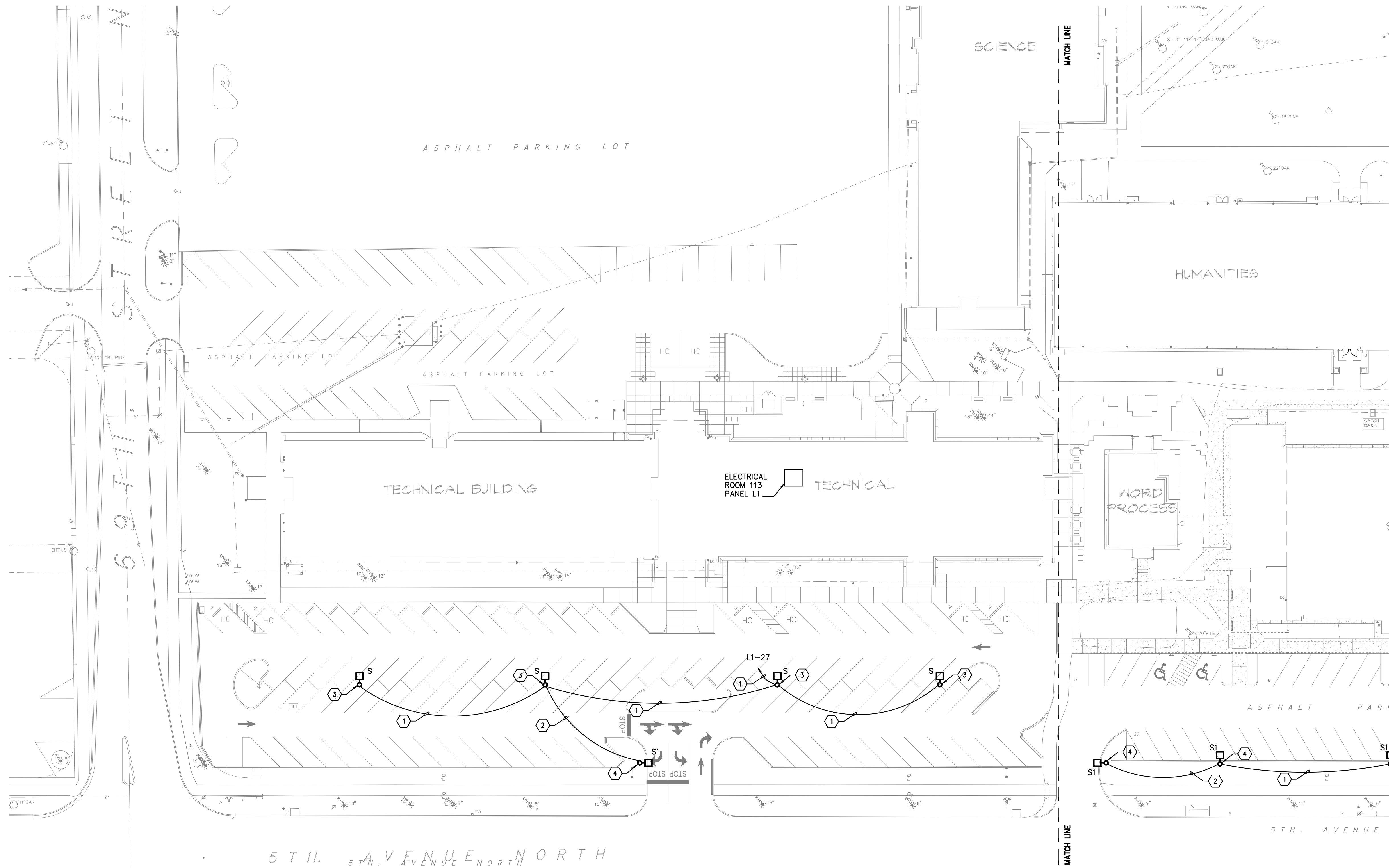
SCALE:
1" = 30' - 0"



DRAWING NUMBER:

E1.2

11/11/2019 10:47:34 AM N:_2019\19-0560 SPC Gibbs Parking Lot Lighting\Electrical\19-0560_E2.1.E2.2_Site Lighting-NEW.dwg



SITE PLAN WEST- LIGHTING

SCALE: 1" = 30'-0"

GENERAL NOTES

1. ALL SITE LIGHTING SHALL BE RUN IN MINIMUM 1" CONDUIT.
2. MAINTAIN EXISTING SITE LIGHTING SWITCHING AND AUTOMATIC CONTROLS.

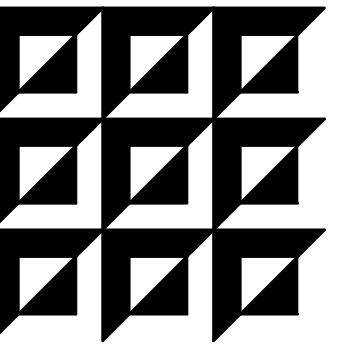
KEYED NOTES

- ① PROVIDE 2-#10 CU. & 1-#10 CU. E.G. IN 1" CONDUIT.
- ② WIRE NEW SITE LIGHT TO EXISTING LIGHTING CIRCUIT. PROVIDE 2-#10 CU. & 1-#10 CU. E.G. IN 1" CONDUIT.
- ③ NEW POLE ON 30" A.F.G. BASE. CONTRACTOR SHALL REPAIR ASPHALT AND PARKING STRIPING AROUND NEW CONCRETE BASE.
- ④ NEW POLE ON 8" A.F.G. BASE. CONTRACTOR SHALL REPAIR/REPLACE LANDSCAPING TO PRIOR CONDITION.

NOTE: NOT ALL KEYED NOTES ABOVE MAY APPEAR ON THIS SHEET.

BID ALTERNATE

PROVIDE DEDUCTIVE ALTERNATE TO RE-USE EXISTING WIRING TO POLE LOCATIONS IN LIEU OF NEW WIRING. DEDUCTIVE ALTERNATE PRICING SHALL BE PROVIDED AS A SINGLE LINE ITEM PER CIRCUIT.



ENGINEERING MATRIX, INC.
CONSULTING ENGINEERS
2860 SCHERRER DRIVE, SUITE 640
ST. PETERSBURG, FLORIDA 33716
PH: (727) 973-4606 F: (727) 973-3902
EMAIL: emi@engmatrix.com
CERT. OF AUTHORIZATION NO. 4288
© 2019 Engineering Matrix, Inc.

SEAL:

DRAWING PHASE:

PERMIT DOCUMENTS

ISSUE DATE: 11-26-2019

EMI JOB NO. 19-0560

DRAWING REVISIONS:

ST. PETERSBURG COLLEGE
ST. PETERSBURG/GIBBS CAMPUS
LIGHTING, 5TH AVE PARKING LOT
6605 5TH AVE. N., ST. PETERSBURG, FL 33710

SPC
ST. PETERSBURG
COLLEGE

DRAWN BY: JTH CHECKED BY: CAT

DRAWING TITLE:

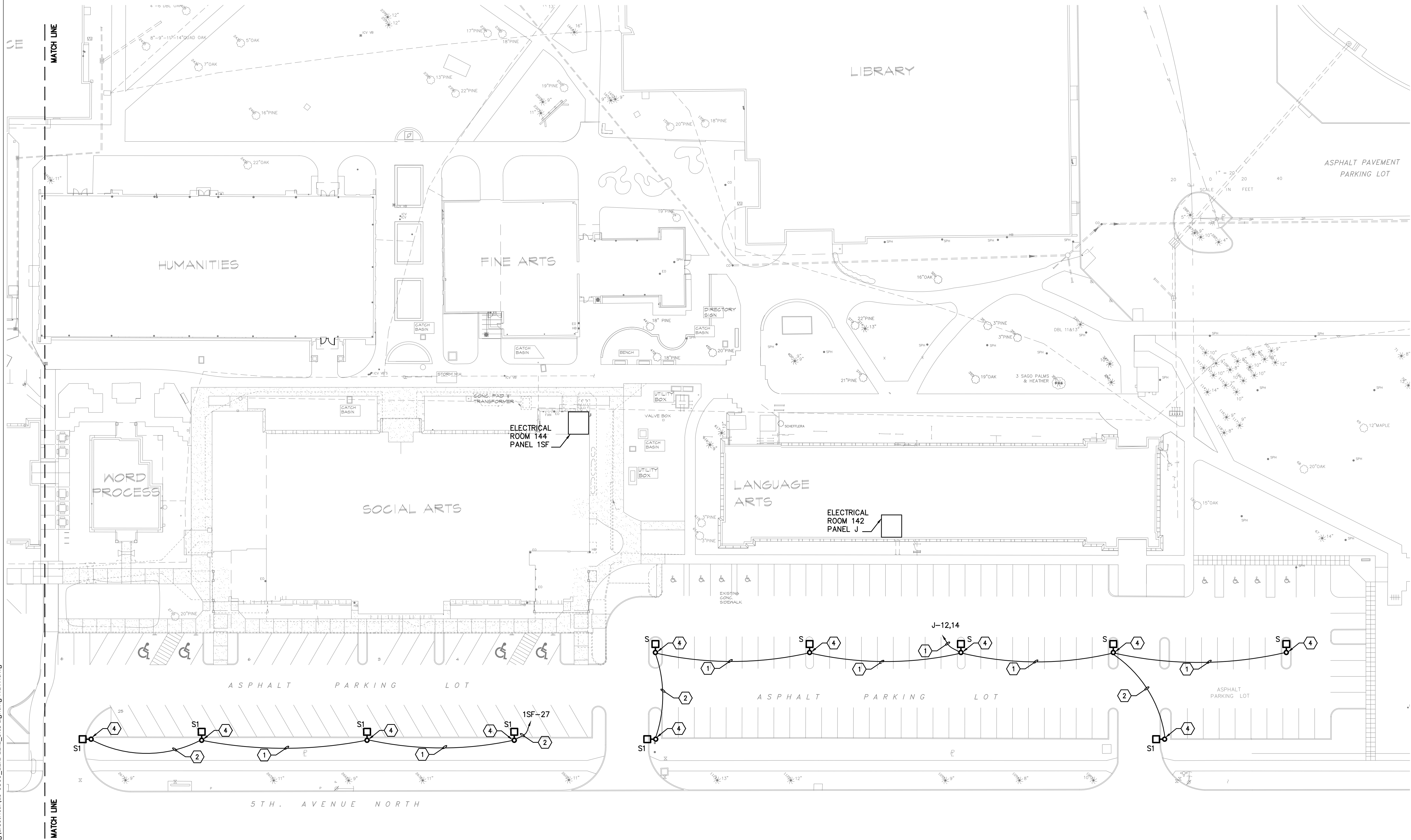
SITE PLAN
WEST-
LIGHTING

SCALE: 1" = 30' - 0" NORTH:

DRAWING NUMBER:

E2.1

11/11/2019 10:47:34 AM N:_2019\19-0560 SPC Gibbs Parking Lot Lighting\Electrical\19-0560_E2.1-E2.2_Site Lighting-NEW.dwg



SITE PLAN EAST- LIGHTING
SCALE: 1" = 30'-0"

GENERAL NOTES

1. ALL SITE LIGHTING SHALL BE RUN IN MINIMUM 1" CONDUIT.
2. MAINTAIN EXISTING SITE LIGHTING SWITCHING AND AUTOMATIC CONTROLS.

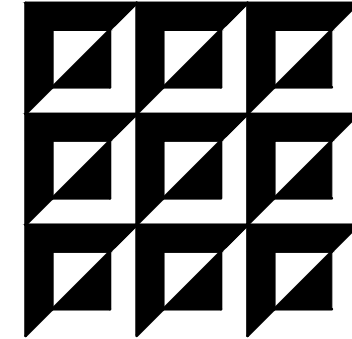
KEYED NOTES

- ① PROVIDE 2-#10 CU. & 1-#10 CU. E.G. IN 1" CONDUIT.
- ② WIRE NEW SITE LIGHT TO EXISTING LIGHTING CIRCUIT. PROVIDE 2-#10 CU. & 1-#10 CU. E.G. IN 1" CONDUIT.
- ③ NEW POLE ON 30" A.F.G. BASE. CONTRACTOR SHALL REPAIR ASPHALT AND PARKING STRIPING AROUND NEW CONCRETE BASE.
- ④ NEW POLE ON 8" A.F.G. BASE. CONTRACTOR SHALL REPAIR/REPLACE LANDSCAPING TO PRIOR CONDITION.

NOTE: NOT ALL KEYED NOTES ABOVE MAY APPEAR ON THIS SHEET.

BID ALTERNATE

PROVIDE DEDUCTIVE ALTERNATE TO RE-USE EXISTING WIRING TO POLE LOCATIONS IN LIEU OF NEW WIRING. DEDUCTIVE ALTERNATE PRICING SHALL BE PROVIDED AS A SINGLE LINE ITEM PER CIRCUIT.



ENGINEERING MATRIX, INC.
CONSULTING ENGINEERS
2860 SCHERRER DRIVE, SUITE 640
ST. PETERSBURG, FLORIDA 33716
PH: (727) 973-4606 F: (727) 973-3902
EMAIL: em@engmatrix.com
CERT. OF AUTHORIZATION NO. 4288
© 2019 Engineering Matrix, Inc.

SEAL:

DRAWING PHASE:
PERMIT DOCUMENTS

ISSUE DATE:	EMI JOB NO.
11-26-2019	19-0560

DRAWING REVISIONS:

ST. PETERSBURG COLLEGE
ST. PETERSBURG/GIBBS CAMPUS
LIGHTING, 5TH AVE PARKING LOT
6605 5TH AVE. N., ST. PETERSBURG, FL 33710

SPC
ST. PETERSBURG
COLLEGE

DRAWN BY: JTH CHECKED BY: CAT

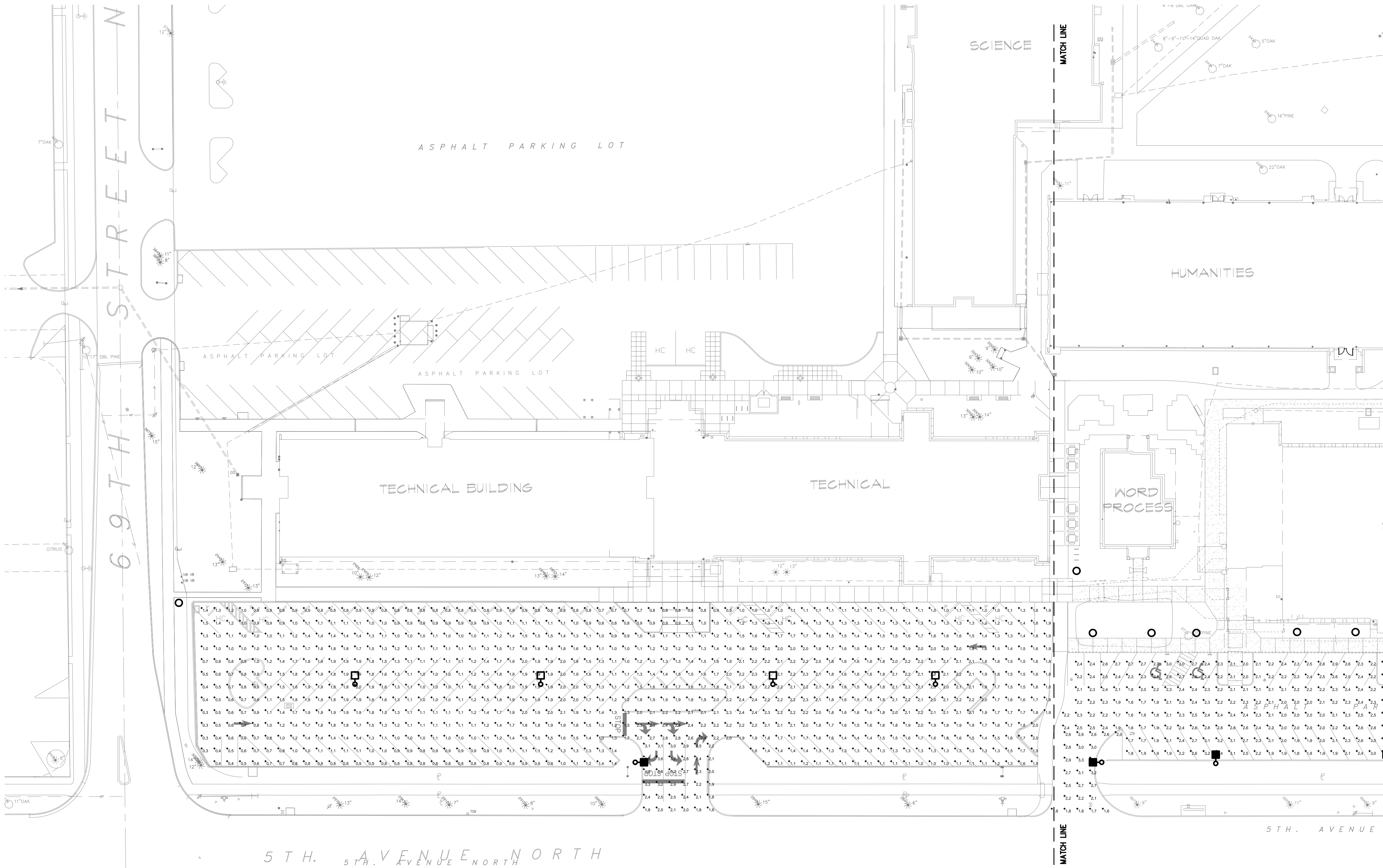
DRAWING TITLE:
**SITE PLAN
EAST -
LIGHTING**

SCALE: 1" = 30' - 0" NORTH:

DRAWING NUMBER:

E2.2

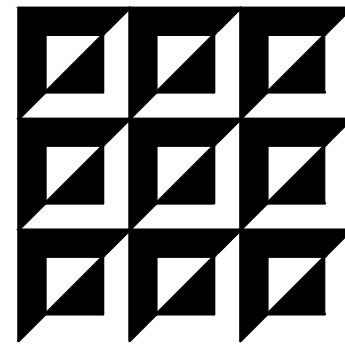
11/11/2019 9:38:18 AM N:_2019\19-0560 SPC Gibbs Parking Lot Lighting\Electrical\19-0560_E3.1.E3.2_Site Lighting-NEW.dwg



Schedule									
Symbol	Label	Quantity	Manufacturer	Catalog Number	Description	Lamp	Number Lamps	Filename	Lumens Per Lamp
	S	9	Lithonia Lighting	DSX0 LED P7 40K TSM MVOLT	DSX0 LED P7 40K TSM MVOLT	LED	1	DSX0_LED_P7_40K_TSM_MVOLT.ies	19058
	S1	7	Lithonia Lighting	DSX0 LED P6 40K T4M MVOLT	DSX0 LED P6 40K T4M MVOLT	LED	1	DSX0_LED_P6_40K_T4M_MVOLT.ies	15627
	EXISTING WALKWAY LIGHTING	13					1	3064_33400 Type V Refractor.IES	16000

Statistics						
Description	Symbol	Avg	Max	Min	Max/Min	Avg/Min
TECHNICAL BLDG ENTRANCE	+	2.6 fc	4.0 fc	1.6 fc	2.5:1	1.6:1
TECHNICAL BLDG LOT	+	1.4 fc	2.8 fc	0.3 fc	9.3:1	4.7:1

SITE PHOTOMETRIC PLAN WEST- LIGHTING
SCALE: 1" = 30'-0"



ENGINEERING MATRIX, INC.
CONSULTING ENGINEERS
2860 SCHERRER DRIVE, SUITE 640
ST. PETERSBURG, FLORIDA 33716
PH: (727) 979-4606 F: (727) 979-3902
EMAIL: emi@engineeringmatrix.com
CERT. OF AUTHORIZATION NO. 4288
© 2019 Engineering Matrix, Inc.

SEAL:

DRAWING PHASE:	
PERMIT DOCUMENTS	
ISSUE DATE:	EMI JOB NO.
11-26-2019	19-0560

DRAWING REVISIONS:

ST. PETERSBURG COLLEGE
ST. PETERSBURG/GIBBS CAMPUS
LIGHTING, 5TH AVE PARKING LOT
6605 5TH AVE. N., ST. PETERSBURG, FL 33710



DRAWN BY: JTH CHECKED BY: CAT

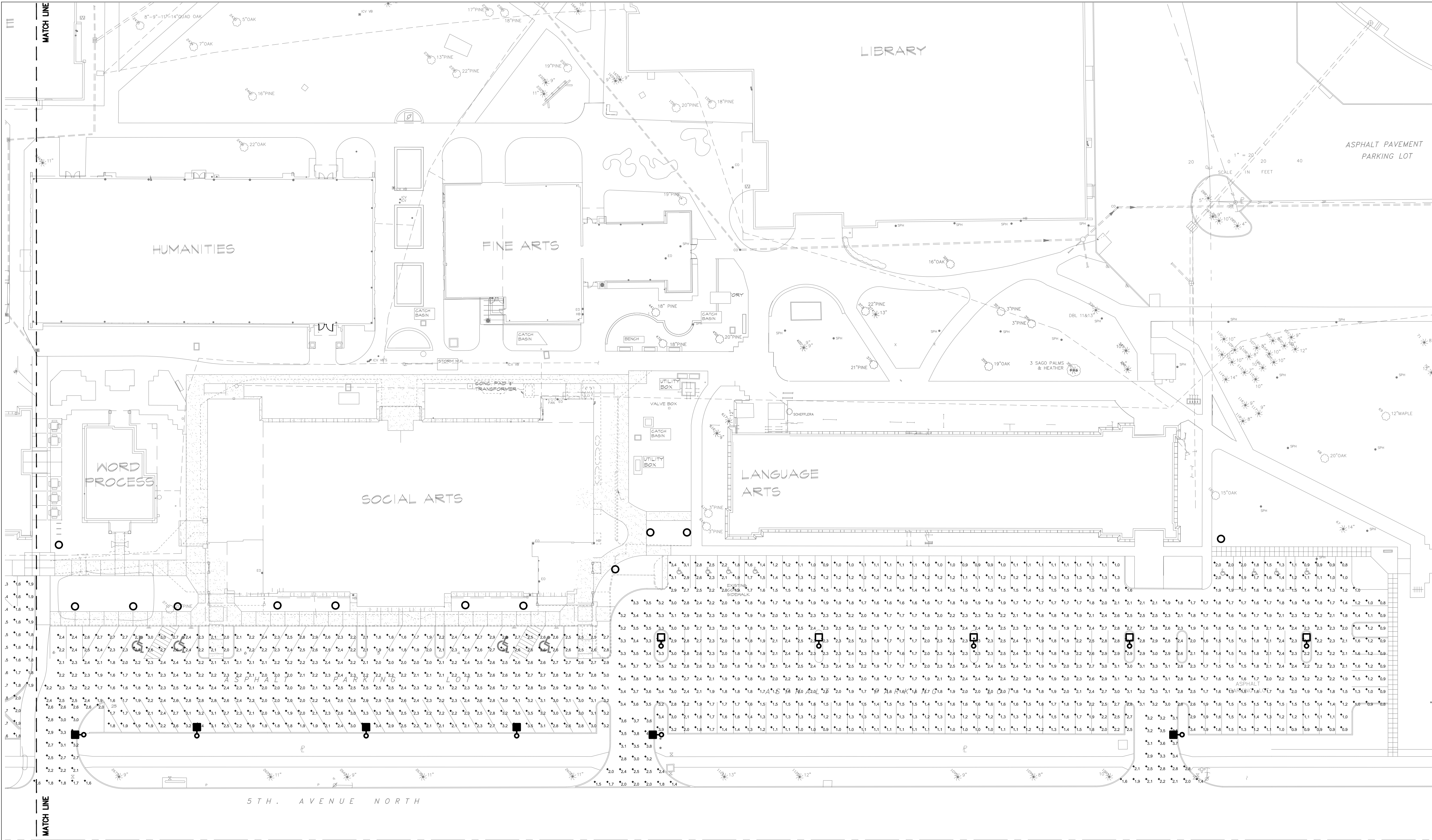
DRAWING TITLE:
SITE
PHOTOMETRIC
PLAN WEST-
LIGHTING

SCALE: 1" = 30' - 0" NORTH:

DRAWING NUMBER:

E3.1

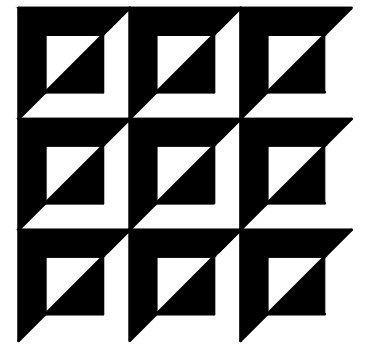
11/11/2019 9:38:18 AM N:_2019\19-0560 SPC Gibbs Parking Lot Lighting\Electrical\19-0560_E3.1.E3.2_Site Lighting-NEW.dwg



Schedule									
Symbol	Label	Quantity	Manufacturer	Catalog Number	Description	Lamp	Number Lamps	Filename	Lumens Per Lamp
	S	9	Lithonia Lighting	DSX0 LED P7 40K TSM MVOLT	DSX0 LED P7 40K TSM MVOLT	LED	1	DSX0_LED_P7_40K_TSM_MVOLT.ies	19058
	S1	7	Lithonia Lighting	DSX0 LED P6 40K T4M MVOLT	DSX0 LED P6 40K T4M MVOLT	LED	1	DSX0_LED_P6_40K_T4M_MVOLT.ies	15627
	EXISTING WALKWAY LIGHTING	13					1	3064_33400 Type V Reflector.IES	16000

Statistics						
Description	Symbol	Avg	Max	Min	Max/Min	Avg/Min
LANGUAGE ARTS BLDG EAST ENTRANCE	+	2.7 fc	3.7 fc	1.4 fc	2.6:1	1.9:1
LANGUAGE ARTS BLDG LOT	+	1.9 fc	3.9 fc	0.8 fc	4.9:1	2.4:1
SOCIAL ARTS BLDG EAST ENTRANCE	+	2.7 fc	4.0 fc	1.4 fc	2.9:1	1.9:1
SOCIAL ARTS BLDG LOT	+	2.4 fc	3.6 fc	1.6 fc	2.3:1	1.5:1
SOCIAL ARTS BLDG WEST ENTRANCE	+	2.5 fc	3.4 fc	1.6 fc	2.1:1	1.6:1

SITE PHOTOMETRIC PLAN EAST- LIGHTING
SCALE: 1" = 30'-0"



ENGINEERING MATRIX, INC.
CONSULTING ENGINEERS
2860 SCHERRER DRIVE, SUITE 640
ST. PETERSBURG, FLORIDA 33716
PH: (727) 979-4608 F: (727) 979-3902
EMAIL: emi@engmatrix.com
CERT. OF AUTHORIZATION NO. 4288
© 2019 Engineering Matrix, Inc.

SEAL:

DRAWING PHASE:
PERMIT DOCUMENTS
ISSUE DATE: 11-26-2019
EMI JOB NO. 19-0560

DRAWING REVISIONS:

ST. PETERSBURG COLLEGE
ST. PETERSBURG/GIBBS CAMPUS
LIGHTING, 5TH AVE PARKING LOT
6605 5TH AVE. N., ST. PETERSBURG, FL 33710



DRAWN BY: JTH CHECKED BY: CAT

DRAWING TITLE:
SITE
PHOTOMETRIC
PLAN EAST-
LIGHTING

SCALE: 1" = 30' - 0" NORTH:

DRAWING NUMBER:

E3.2